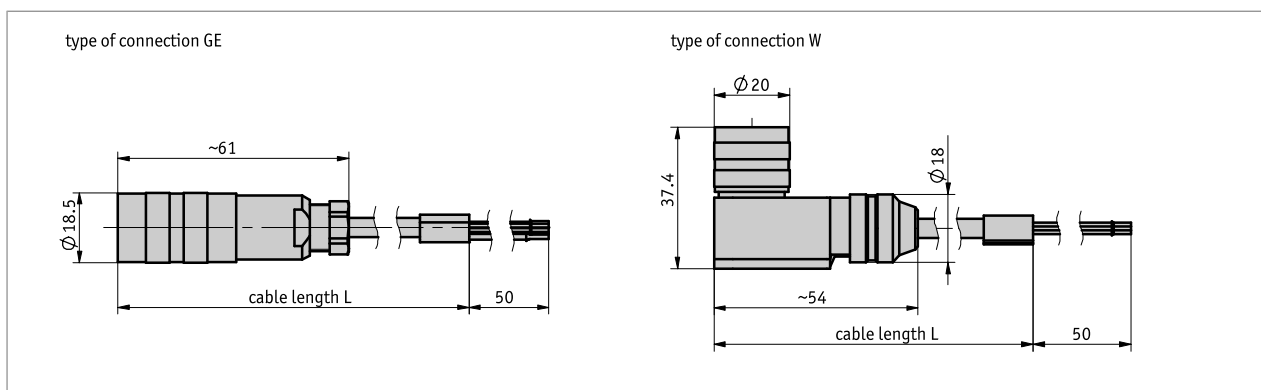
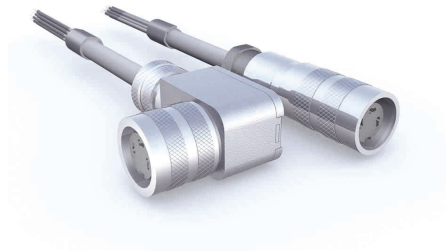


Profile

- Ready-to-use cable connection
- Cable lengths up to 20 m
- Connection technology M16, 7-pole



Voltage drop should be envisaged with increasing cable length. This should be taken into account for the electrical design.



Mechanical data

Feature	Technical data	Additional information
Cable sheath	PUR	

Ambient conditions

Feature	Technical data	Additional information
Ambient temperature	-30 ... 100 °C	

pin assignment

Cable color	PIN
white	1
brown	2
green	3
yellow	4
gray	5
Pink	6
blue	7

Order

■ Ordering table

Feature	Ordering data	Spezifikation	Additional information
Cable length	A 00.2	0.2 m	

Feature	Ordering data	Spezifikation	Additional information
	...	01.0 ... 20.0 m, in intervals of 1 m	

■ Order key

KV07S0 - GE/GE - A

 **Scope of delivery:**
KV07S0