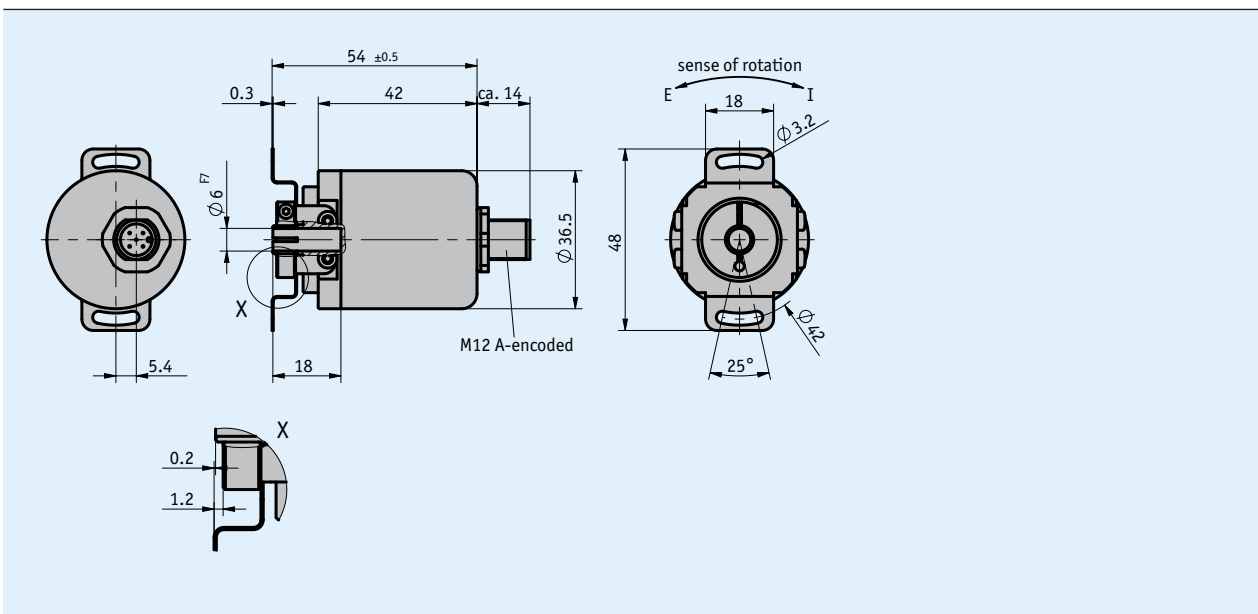
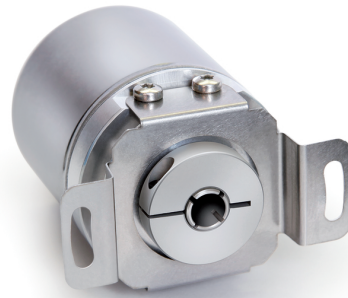


### Profile

- Absolute analog encoder
- 12 Bit (4096) resolution over the measuring range
- Operating temperature until -40 °C
- Voltage (0 ... 10 V)/ current (4 ... 20 mA) outputs
- Programmable measuring range via teach-in function with external inputs
- Hollow shaft with  $\varnothing 6$  mm



### Mechanical data

Feature	Technical data	Additional information
Shaft	stainless steel	
Flange	aluminum	
Housing	coated steel	
Speed	≤12000 rpm	
Moment of inertia	≤20 gcm <sup>2</sup>	
Starting torque	≤20 Ncm	at 25 °C
Shaft load rating	axial 20 N radial 80 N	
Weight	~0.15 kg	

### Electrical data

#### ■ Transducer, power output

Feature	Technical data	Additional information
Operating voltage	15 ... 30 V DC	4 ... 20 mA
Current consumption	typical 40 mA	4 ... 20 mA
Linearity	0.15 %	
Load	RL <500 Ω at UB ≥15 V DC	4 ... 20 mA
Accuracy	±0.35°	singleturn
Starting time	<1 s	
Settling time	80 ms	

#### ■ Transducer, voltage output

Feature	Technical data	Additional information
Operating voltage	12 ... 30 V DC	0 ... 10 V
Current consumption	typical 15 mA	0 ... 10 V
Linearity	0.15 %	
Load	RL >10 kΩ at UB ≥12 V DC	0 ... 10 V
Accuracy	±0.35°	singleturn
Starting time	<1 s	
Settling time	80 ms	

### System data

Feature	Technical data	Additional information
Resolution	12 bit (analog output) 12 bit (singleturn)	over the programmed measuring range
Measuring range	≥22.5° ≤1 revolution(s) ≤65536 revolution(s) 16 revolution(s)	S measuring range (singleturn) M measuring range (multiturn) factory setting, M measuring range (multiturn)

### Ambient conditions

Feature	Technical data	Additional information
Ambient temperature	-40 ... 85 °C	
Storage temperature	-40 ... 85 °C	
Relative humidity	98 %	condensation inadmissible
EMC	EN 61000-6-2 EN 61000-6-4	interference resistance / immission emitted interference / emission
Protection category	IP65 (housing side) IP54 (shaft side)	EN 60529 EN 60529
Shock resistance	≤1000 m/s <sup>2</sup> , 6 ms	EN 60068-2-27
Vibration resistance	≤100 m/s <sup>2</sup> , 10 Hz ... 1 kHz	EN 60068-2-6

### Pin assignment

Signal	PIN
I <sub>out</sub> /U <sub>out</sub>	1
+UB	2
GND	3
Set 2	4
Set 1	5

## Order

### Ordering table

Feature	Ordering data	Specification	Additional information
Interface	MWI	4 ... 20 mA	
	MWU	0 ... 10 V	
Measuring range	M	multiturn	
	S	singleturn	≤360° measuring range

### Order key

AH36M -   -   - M12

A
B

Scope of delivery: AH36M

Accessories:  
Electronic display MA50

[www.siko-global.com](http://www.siko-global.com)