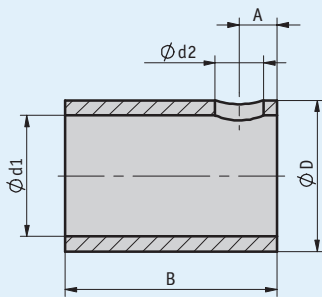
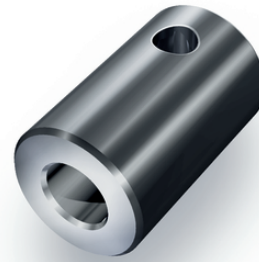


Profile

- Easy and fast mounting
- Steel browned or stainless steel



	A	B	ØD	Ød1	Ød2
RH01	3.75	20	20 _{f7}	≤18 ^{H7}	5.5
RH02	4.0	30	30 _{f7}	≤28 ^{H7}	5.5
RH03	4.5	30	25 _{f7}	≤22 ^{H7}	5.5
RH04	2.8	17	14 _{f7}	≤12 ^{H7}	4.2
RH05	3	25	30 ^{+0.1} _{-0.2}	≤20 ^{H7}	2xM4 (120°)
RH07	2.5	14	10 _{f7}	≤8 ^{H7}	3.2
RH08	3.0	20	14 _{f7}	≤12 ^{H7}	5.2
RH09	3.0	20	20 _{f7}	≤18 ^{H7}	2x3.6 (120°)
RH10	3.75	20	20 _{f7}	≤16 ^{H7}	2x5.5 (120°)

Mechanical data

	RH01	RH02	RH03	RH04	RH05	RH07	RH08	RH09	RH10
compatible with display	DA05/1 DA08 DA09S DE10***	DA10* DA10R/1* DE10**** DE10P	DA10** DA10R/1**	DA04 DE04	KP09P	DA02 DK05	DK01 DK02 DK03	AP04 AP10 GS04	DKE01
Ød ^{H7} steel, burnished	6, 6.35, 8, 10, 12, 12.7, 14, 15, 15.875, 16, 17, 18	10, 12, 12.7, 14, 15, 16, 18, 19.05, 20, 22, 24, 25, 25.4, 26, 28	18, 20, 22	4, 5, 6, 6.35, 8, 9.525, 10, 12	12, 14, 15, 16, 20	6, 6.35, 7, 8	5, 6, 6.35, 8, 9, 9.525, 10, 12		14, 16
Ød ^{H7} stainless steel	VA8, VA9.525, VA10, VA12, VA12.7, VA14, VA15, VA15.875, VA16, VA19.05	VA12.7, VA20, VA24, VA25, VA25.4		VA6.35, VA8, VA9.525, VA10, VA12, VA12.7, VA13		VA8		VA8, VA9.525, VA10, VA12, VA12.7, VA14, VA15, VA15.875, VA16, VA18, VA19.05	

* only with shaft WK; ** only with shaft WL; *** only with shaft 20; **** only with shaft 30

Hint: Texts highlighted in orange color are order characteristics.

Order

Ordering table

Feature	Ordering data	Specification	Additional information
Mounting position	... A	RH01, RH02, RH03, RH04, RH05, RH07, RH08, RH09, RH10	
internal diameter d1	... B	see table "Mechanical data"	

Order key



Scope of delivery: RH, headless screw