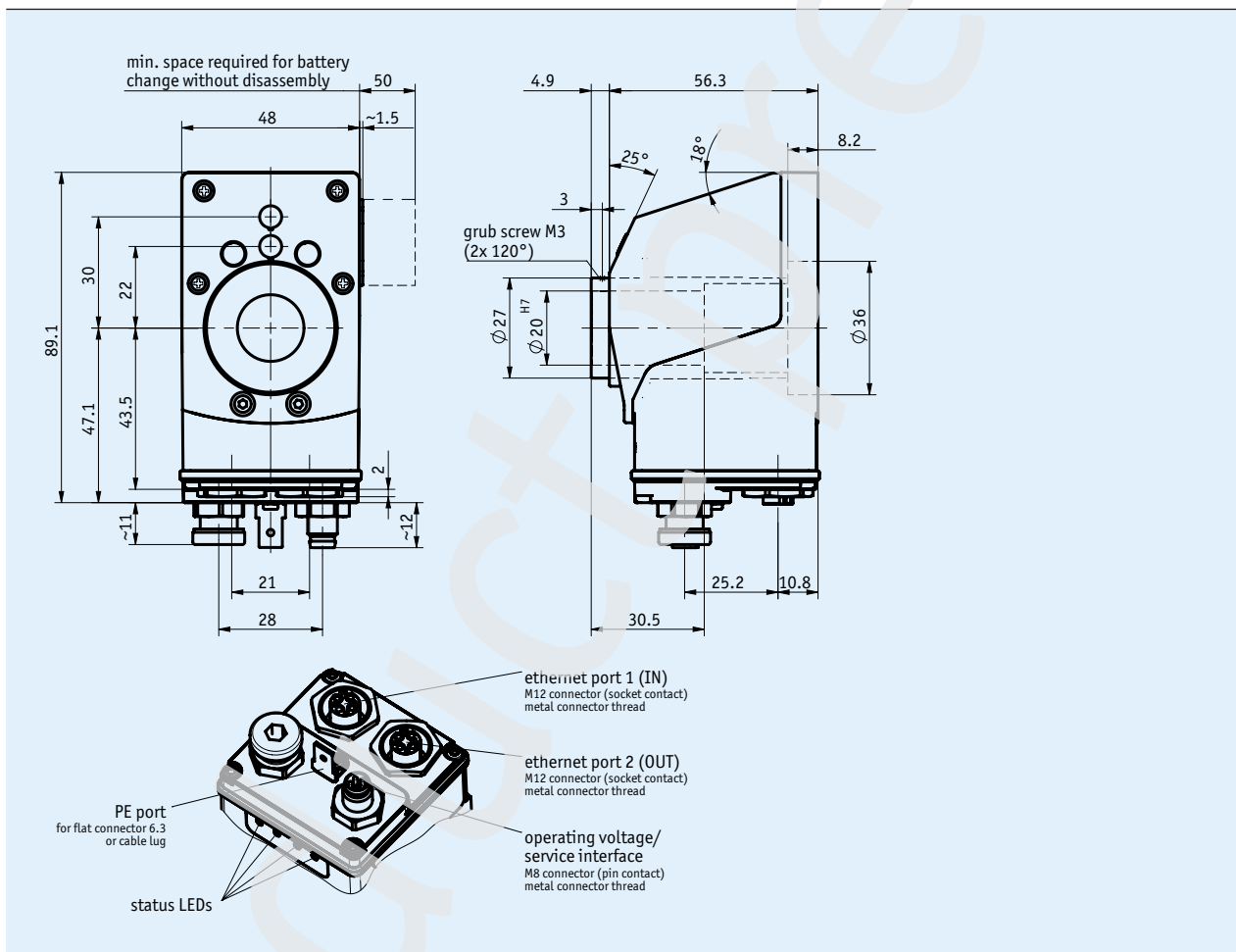


### Profile

- Integrated Industrial-Ethernet-Fieldbus
- Backlit two-row LCD
- Display of target and actual value displays with integrated alignment
- Stainless-steel hollow shaft  $\varnothing 20$  mm, up to  $\varnothing 25.4$  mm as an option
- Robust sensor technology unit thanks to magnetic scanning
- User guidance through status LEDs
- Mechanically compatible with the DA09S and AP10 position indicators
- IP53 type of protection, IP65 as an option



### Mechanical data

Feature	Technical data	Additional information
Shaft	stainless steel	
Housing	reinforced plastic	Metal cover, plug thread, PE port
Color	black	
Speed	≤500 rpm	

## Electrical data

Feature	Technical data	Additional information
Operating voltage	24 V DC $\pm 20\%$	reverse polarity protected
Current consumption	~35 mA	
Battery	internal battery for sensor "quasi-absolute", exchangeable	
Battery service life	~8 year(s)	
Display/display range	6-digit LCD 14-segment, ~8 mm high	2 rows, special characters (backlit LED red/white) -199.999 ... 999.999
Interface	Ethernet/IP, Profinet	future option: EtherCat, Powerlink
Type of connection	1x M8 4-pole operating voltage / service interface 2x M12 socket (Ethernet port 1/2, DLR-capable)	

## System data

Feature	Technical data	Additional information
Resolution	880 increments/revolution	displayed value/revolution freely configurable
System accuracy	$\pm 1^\circ$	

## Ambient conditions

Feature	Technical data	Additional information
Ambient temperature	0 ... 60 °C	
Storage temperature	-20 ... 80 °C	
Relative humidity		condensation inadmissible
EMC	EN 61326-1	industrial immunity requirements, class B emission limit
Protection category	IP53 IP65 as an option	EN 60529, with mating connector only EN 60529, with mating connector only
Shock resistance	500 m/s <sup>2</sup> , 8 ms	EN 60068-2-27
Vibration resistance	100 m/s <sup>2</sup> , 5 ... 150 Hz	EN 60068-2-6