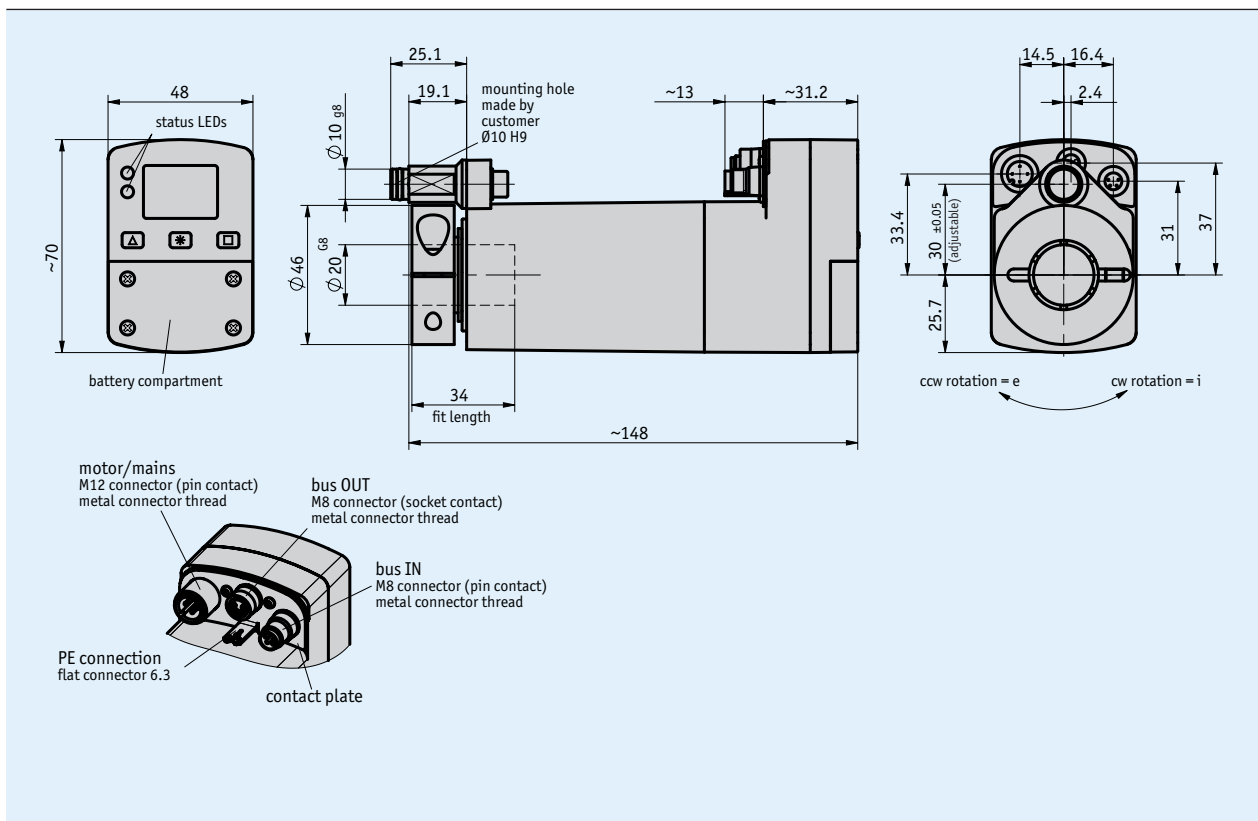
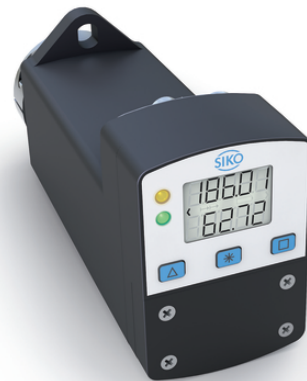


Profile

- easy mounting, no additional coupling needed
- stainless steel hollow shaft, glass fibre reinforced casing
- brushless 24 VDC motor with long service life
- solid absolute sensor, magnetic sensing technology
- 2-line LCD for target and position value and operating keys
- 2 LEDs for user guidance
- integrated RS485 or CANopen interface
- Integrated positioning controller
- M8 + M12 component mounting technology



Mechanical data

| Feature | Technical data | Additional information |
|----------------------------|---|---|
| Shaft | stainless steel | |
| Housing | glass-fiber reinforced plastic | |
| Clamping ring | stainless steel | |
| Torque pin | stainless steel | |
| Nominal torque/rated speed | 7 Nm at 30 rpm $\pm 10\%$ 13 Nm at 15 rpm $\pm 10\%$ | i = 188 i = 368 (14 Nm temporarily adm. break-away torque) |
| Operating mode | S3 intermittent duty: 25 % DC, 10 min. | EN 60034-1 |
| Weight | ~0.9 kg | |

Electrical data

| Feature | Technical data | Additional information |
|-----------------------|---|--|
| Operating voltage | 24 V DC $\pm 10\%$ | reverse polarity protected, output stage |
| | 24 V DC $\pm 10\%$ | reverse polarity protected, control |
| Current consumption | 2.42 A | max. adm. at set point 100% (output stage) |
| Power input | ~48 W | output stage |
| Battery | CR2477N, 3 V lithium, 950 mAh | |
| Battery service life | ~5 year(s) | depending on environmental conditions |
| Rated current | 2.2 A $\pm 10\%$ | at max. adm. torque (output stage) |
| | <60 mA | at 24 V DC (control) |
| Display/display range | 5-digit LCD 7-segment, ~7 mm height | decimal points, 2 rows, special characters |
| Special character | battery, direction arrows | |
| Status display | two LEDs | |
| Keys | parameterizing, resetting, inching, setpoint definition | |
| Bus connection | RS485; CANopen | no galvanic isolation |
| Type of connection | 1x M12-plug connector (A-coded) | 4-pole, 1x pin |
| | 2x M8 plug connectors | 4-pole, 1x socket, 1x pin |
| | grounding via flat connector 6.3 mm | |

System data

| Feature | Technical data | Additional information |
|-----------------|---------------------------------|------------------------|
| Resolution | 720 increments/revolution shaft | |
| Repeat accuracy | ± 1 increment(s) | |
| Travel range | ± 697 revolution(s) | i = 188 |
| | ± 356 revolution(s) | i = 368 |

Ambient conditions

| Feature | Technical data | Additional information |
|----------------------|--------------------------------------|-------------------------------------|
| Ambient temperature | 0 ... 45 °C | |
| Storage temperature | -20 ... 60 °C | |
| Relative humidity | | condensation inadmissible |
| EMC | EN 61800-3, second environment | interference resistance / immission |
| | EN 61800-3, C3 | emitted interference / emission |
| Protection category | IP54, IP65 | EN 60529, mating connectors mounted |
| Shock resistance | 500 m/s ² , 11 ms | EN 60068-2-27 |
| Vibration resistance | <100 m/s ² , 5 ... 150 Hz | EN 60068-2-6 |

Pin assignment

■ Operating voltage (A-coded)

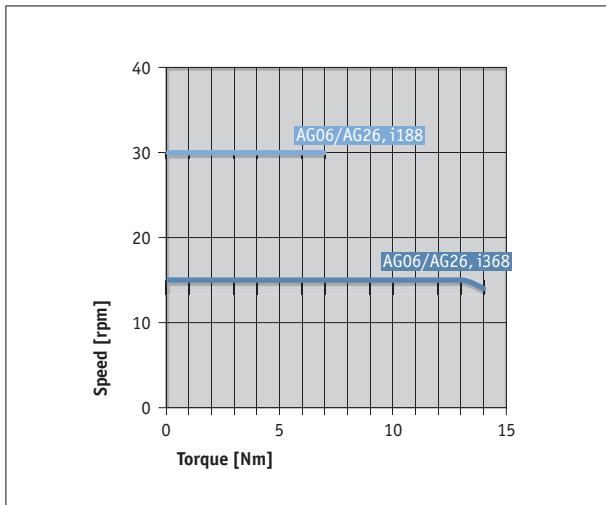
| Signal | PIN |
|--------------------|-----|
| +24 V Output stage | 1 |
| +24 V Control | 2 |
| GND Output stage* | 3 |
| GND Control* | 4 |

■ Interfaces M8

| Signal | PIN |
|-----------------|-----|
| DÜB/TxRX-/CANL | 1 |
| DÜA/TxRX+/CANH | 2 |
| Do not connect! | 3 |
| SGND* | 4 |

* internally linked

Performance curve



Order

Ordering table

| Feature | Ordering data | Specification | Additional information |
|-----------------------|---------------|-----------------------|------------------------|
| Gear ratio | 188 | i = 188 | |
| | 368 | i = 368 | |
| Protection category | IP54 | IP54 | |
| | IP65 | IP65 | |
| Shaft design/diameter | KR/20 | clamping ring, ø20 mm | |
| | | others on request | |
| Interface/protocol | S3/09 | RS485/SIKONETZ5 | |
| | CAN | CANopen | |

Order key

AG06 Fieldbus - A - 50W - B - C - B - ABM - D - SW

Scope of delivery: AG06 Fieldbus, Mounting instructions, Documentation on CD

Accessories:

Cable extension KV04S1

www.siko-global.com

Cable extension KV04S2

www.siko-global.com

Easy Touch Control ETC5000

www.siko-global.com

Programming software ProTool DL

www.siko-global.com

Mating Connector Overview

www.siko-global.com

Mating connector, Fieldbus IN, 4-pole, socket

Order key 84209

Mating connector, Fieldbus OUT, 4-pole, pin

Order key 84210

Mating connector, voltage supply, 4-pole, angle socket

Order key 83091

bus terminating connector, Fieldbus, 4-pole, pin

Order key BAS-0005